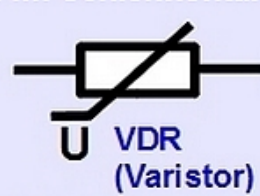
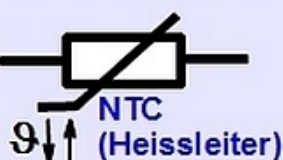
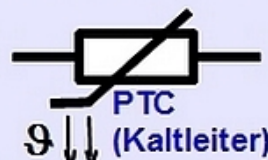
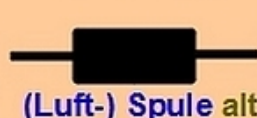


# Schaltsymbole der (Analog-) Elektronik

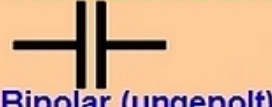
## Ohmsche Widerstände



## Spulen



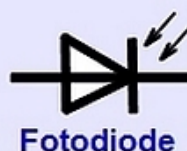
## Kondensatoren



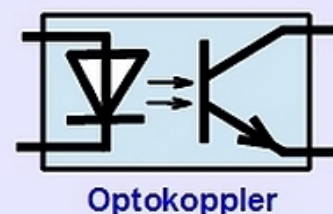
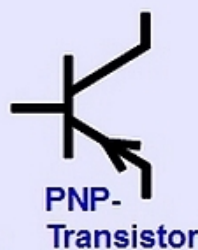
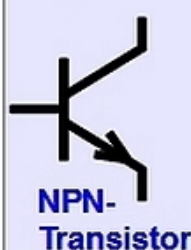
## Schaltkontakte



## Halbleiter-Dioden



## Bipolare Transistoren



## Monopolare Transistoren



## Thyristoren, Diacs, Triacs



## Operations-Verstärker (OP, OpAmp)

